

alienation®

CATALOG 2015

Zach Taylor
Vice President
(574)329-2457
zach@alienationbmx.com

Rob Morgan
Brand Manager
(574)269-7944
rob@alienationbmx.com



A P P A R E L

COMPONENT



GROOVY



100% thin cotton for a comfortable feel
AAbolt logo tag stitched on every tee
AVAILABLE IN: MEDIUM, LARGE & XL

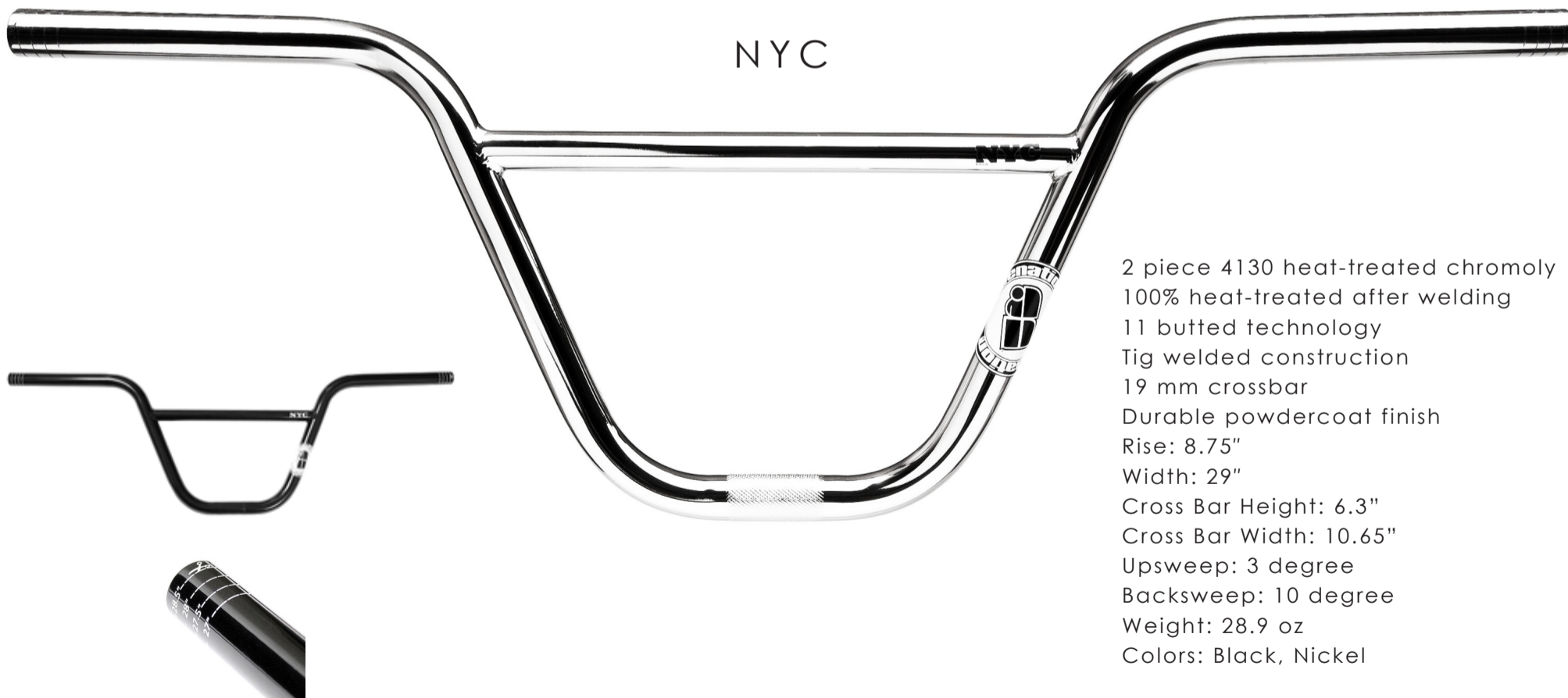
B A R S

CHICAGO



2 piece 4130 heat-treated chromoly
100% heat-treated after welding
11 butted technology
Tig welded construction
19 mm crossbar
Durable powdercoat finish
Rise: 8.25"
Width: 29"
Cross Bar Height: 5.9"
Cross Bar Width: 10.25"
Upsweep: 2 degree
Backsweep: 11 degree
Weight: 28.6 oz
Colors: Black, Nickel

NYC



2 piece 4130 heat-treated chromoly
100% heat-treated after welding
11 butted technology
Tig welded construction
19 mm crossbar
Durable powdercoat finish
Rise: 8.75"
Width: 29"
Cross Bar Height: 6.3"
Cross Bar Width: 10.65"
Upsweep: 3 degree
Backsweep: 10 degree
Weight: 28.9 oz
Colors: Black, Nickel

VAULT



7075 T6 CNC'd
Topload w/split bar clamps
Black bolts to match
Stack Height: 31.8 mm
Reach: 53 mm
Rise: 33 mm
Weight: 289 g / 10.2 oz
Color: Gloss Black



IRON MAIDEN

7075 T6 CNC'd
Frontload w/split handlebar clamps
Colored hollow bolts to match
Reach: 50 mm
Stack Height: 34 mm
Rise (upright): 8.5 mm
Bar Bore: 22.2 bar bore
Weight: 260 g / 9.2 oz
Color: Black

G R I P S



MOTO

Flangeless lock-on with an ultra thin profile
Proprietary window technology for greater comfort
Classic motocross style
knurled on the top side with a half waffle pattern below
Features a 1 pc alloy end cap for simplicity and safety.
Utilizes the new VEXK material. 10x more durable.
Length: 135 mm
Colors: Black

BACKLASH

Finned Bi-directional pattern for unmatched grip
AA Bar End included
A25 Super Soft Kraton Single Density Rubber
Length: 145 mm
Colors: Black



AA BAR ENDS

Push style bar ends
Unique rib design fits most any bar
Packaged in pairs
Colors: Black

S E A T S



BIG BLACK & BEAUTIFUL (BBB)

Slider System offering fore/aft positioning
Synthetic Perforated Cover
Nylon Fiber Base
Size: 8.4" (Length) * 4.9" (Width) * 2.3" (Pad Height)
Weight: 10.9 oz
Color: Black

SLIDER BASIC

Slider System; Offers fore/aft positioning
Nylon Fiber Base, Slim & Light, Texture Top
Model: Plastic
Size: 210mm (L) * 110mm (W)
Weight: 170g
Colors: Black



S E A T P O S T S

BILLY CLUB



Pivotal compatible
Ultra-light 3D-forged 6061 alloy
Internal oval construction
Shot-peen anodized
Completely slammable
Diameter: 25.4, 26.8, 27.2 mm
Length: 320 mm
Weight: 207g, 215g, 230g
Colors: Black, Polished

MIDGET STICK



aka Stump / Pivotal compatible
Ultra-light 3D-forged 6061 alloy
Internal oval construction
Slimmed at the top
Shot-peen anodized
Diameter: 25.4 mm
Length: 135 mm
Weight: 95g
Colors: Black

P E D A L S



EFFECTS

Dual Concave Platform Molded from a Nylon+Fiber Composite
14 Traction Pins Per Side
Micro Knurled Body
Embossed Logos
Unsealed Bearings
6 mm Broached 9/16" Chromoly Spindle
Weight: 200g each
Color: Black

H U B S



THRUST CASSETTE



3/8" Bolt-On 16t rear

Details: 6 Pawls, 3.53 Degrees of Engagement, 2 Independent Series of 3 Pawls

Body: 6061 T6

Axle: 7075 T6 15 mm hollow axle

Bearing: Stainless sealed cartridge bearings

Holes: 36

Drive: RHD

Cog: Anodized 7075 T6, 13 – 18 tooth (Shimano lock-ring system)

Colors: Black

Pitch Center Diameter: Non-Drive 45 mm Drive-Side 63 mm

Drive-Side Center to Flange: 32.56 mm

Non-Drive Side Center to Flange: 34.54 mm

Weight: 440 g, included bolts & 16t cog / 15.5 oz



15 mm Thru Axle 16t rear

Details: 6 Pawls, 3.53 Degrees of Engagement, 2 Independent Series of 3 Pawls

Body: 6061 T6

Axle: 7075 T6 15 mm hollow sub-axle

Bearing: Stainless sealed cartridge bearings

Holes: 36

Drive: RHD

Cog: Anodized 7075 T6, 13 – 18 tooth (Shimano lock-ring system)

Colors: Black

Pitch Center Diameter: Non-Drive 45 mm Drive-Side 63 mm

Drive-Side Center to Flange: 32.56 mm

Non-Drive Side Center to Flange: 34.54 mm

Weight: 340 g less thru-axle / 12 oz

Optional: 149 mm 15 mm thru-axle, 72 g / 2.5 oz



14 mm RHD or LHD 9t rear

Details: 6 Pawls, 3.53 Degrees of Engagement, 2 Independent Series of 3 Pawls

Body: 6061 T6

Axle: Cr-Mo 15 mm female hollow w/a machined 14 mm 3 mm extension plus 3/8" hardware

End-Cap: Steel (SCM 440) with knurling

Bearing: Stainless sealed cartridge bearings

Holes: 36

Drive: 9t 1/2 x 1/8, RHD or LHD

Colors: Black

Pitch Center Diameter: Non-Drive 45 mm Drive-Side 63 mm

Drive-Side Center to Flange: 32.56 mm

Non-Drive Side Center to Flange: 34.54 mm

Weight: 482 grams / 17 oz

Optional: Press-fit half guard, 48 g / 1.7 oz



THRUST CASSETTE

This particular internal system assures 3 pawls engage while the other series of 3 pawls wait to engage.

Drag has been reduced with fewer engagement points.

Pawl life expectancy is also increased.

- 6 Pawls
- 51 Tooth Engagement Ring
- 102 Engagement Points
- 3.53 Degrees of Engagement



The Thrust hub utilizes a massive thrust bearing that permits rotation between the shell & the cog carrier/driver while supporting axial load. Makes for butter smooth rotation.

For the most part the entire series of Thrust hubs can be unassembled without tools. Allows for easy access to maintain the hub(s).



THRUST FRONT



3/8" Bolt-On race front
Details: Small flange, press fit system
Body: 6061 T6
Axle: 7075 T6 15 mm hollow axle
Bearing: Stainless sealed cartridge bearings
Holes: 36
Colors: Black
Pitch Center Diameter: 45 mm
Center to Flange: 29 mm
Weight: 220 g with hardware / 7.8 oz



3/8" Bolt-On street front
Details: Small flange, press fit system
Body: 6061 T6
Axle: 3/8" Cr-Mo 15 mm hollow axle
Bearing: 6902 LB Stainless sealed cartridge bearings
Holes: 36
Colors: Black
Pitch Center Diameter: 45 mm
Center to Flange: 29 mm
Weight: 230 g with hex bolts / 8.1 oz
Optional: Press-fit full guard, 42 g / 1.5 oz



TINMAN FRONT

Low flange, drilled & machined collars for lighter weight
Body: 6061 T6
Axle: 7075 T6 heat treated hollow with 3/8" mm hollow bolts
Bearing: 4 sealed cartridge bearings
Holes: 36
Colors: Black
Flange Diameter: 47 mm
Pitch Center Diameter: 38 mm
Center To Flange: 34.2 mm
Weight: 175g
Optional: 1PC CNC Hub Guard, Black, 30g



20MM THRU-AXLE FRONT



Details: Med-flange, press fit system

Shell: 6061 T6

Bearing: 6805 Stainless sealed cartridge bearings

Holes: 36

Colors: Black

Pitch Center Diameter: 51.5mm

Center to Flange: 27.5mm

Weight: 200 grams less T/A / 7.1 oz.

Optional: 7075 T6 Tapered & Broached T/A 65g/2.3oz



RUSH V2 FREECOASTER



External adjustable slack

Body: 6061 T6

Axle: 14mm 4130 CR-MO Hollow

Bearing: ACB Quad Sealed Bearing

Holes: 36

Drive: 9t, 1/2 x 3/32 LSD, RSD (optional 11t)

Colors: Matte Black

Flange Diameter: 67 mm

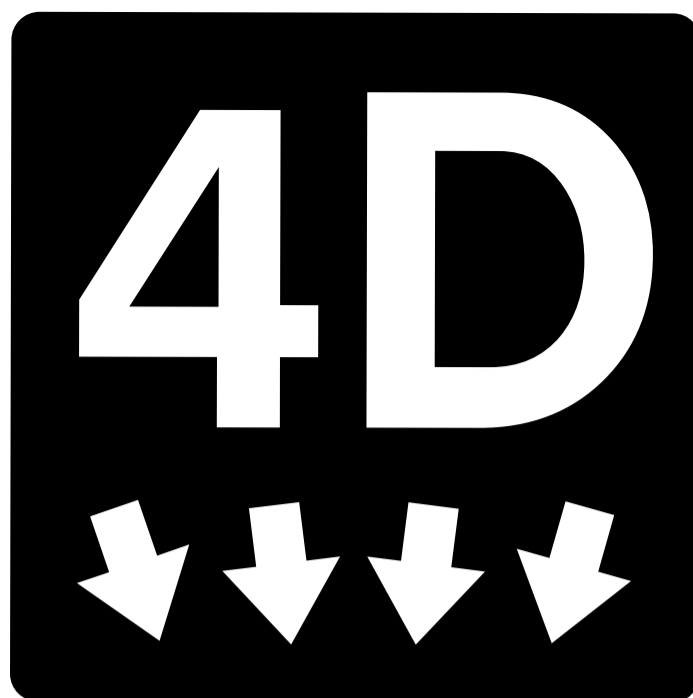
Pitch Center Diameter: 58mm

Drive-Side Center to Flange: 28.5 mm

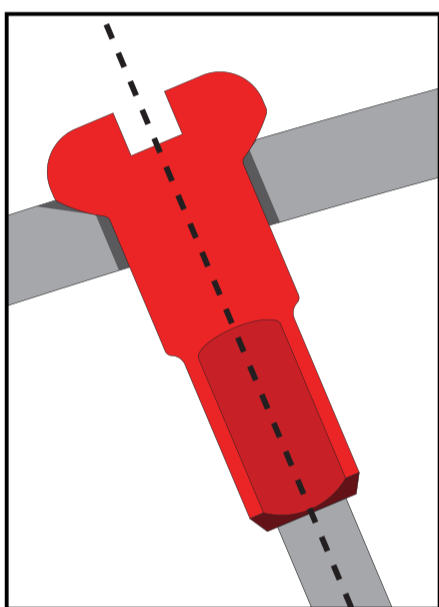
Non-Drive Side Center to Flange: 28.5 mm

Weight: 660g



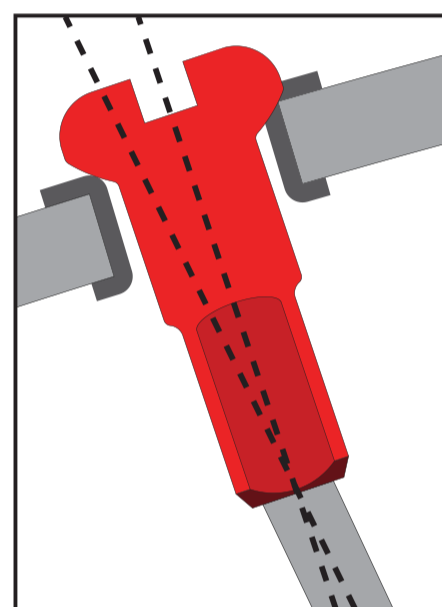


F O U R D I R E C T I O N



ALIENATION 4D SPOKE DRILLING
WITHOUT EYELETS

We have eliminated spoke bending loads and stress for the most durable wheel build available by drilling holes that follow the path of the spokes.



STANDARD SPOKE
DRILLING WITH EYELETS

THE BENEFITS OF 4D

LIGHTER WEIGHT

Rims featuring ALIENATIONS proprietary 4D (four directions) technology are better than rims with eyelets.

Rims with 4D technology build stronger wheels which allow lighter weight rims.

GREATER STRENGTH AND DURABILITY

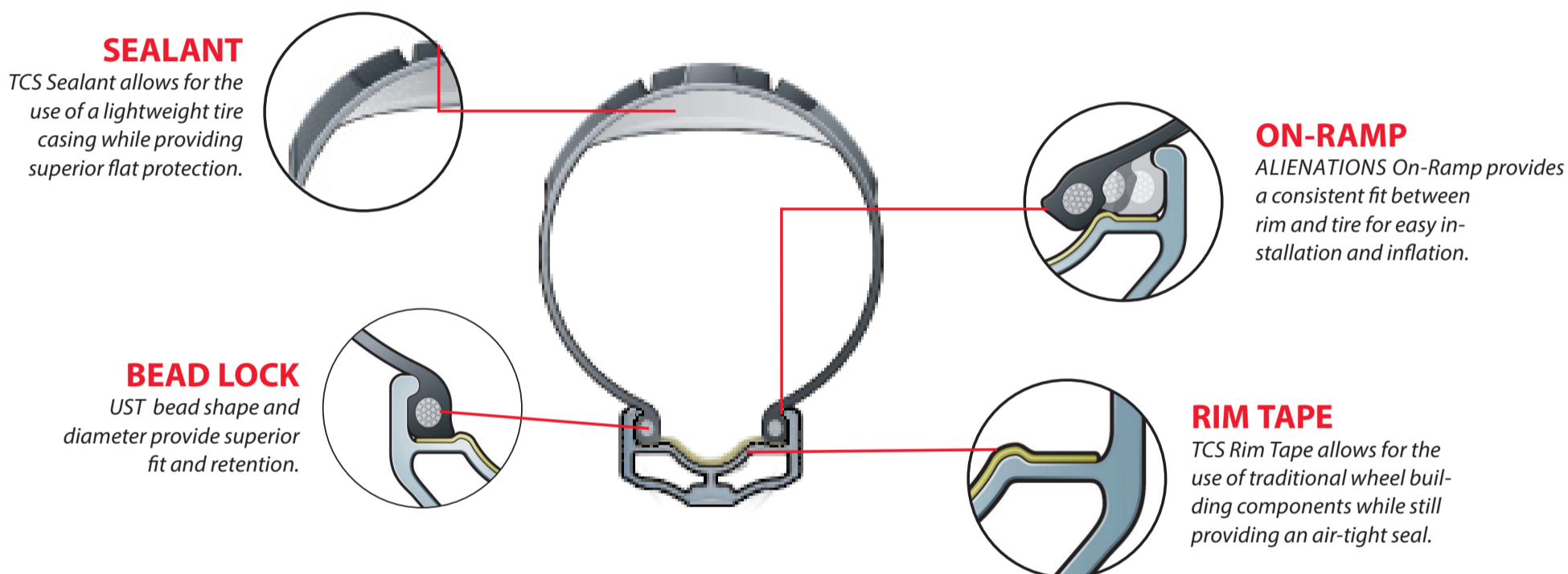
By drilling spoke holes at an angle that follows the path of the spokes, the spoke nipple rests in a neutral position. When a spoke under tension is unimpeded from the rim to the hub flange there is no stored bending load that leads to a spring affect in a built wheel.

HIGH PERFORMANCE

Wheels built with ALIENATIONS proprietary 4D technology offer precise tracking and greater stability with incredible durability, lively feel and a reduced chance of failure.



T U B E L E S S C O M P A T I B L E S Y S T E M



THE BENEFITS OF TCS

SIMPLE.

With ultimate control over the rim and tire fit, TCS products ensure the installation process is simple. With the use of a floor pump, no special tools are required making the process as easy as installing an inner tube.

SMART.

TCS uses standardized UST specifications to enable industry wide compatibility. The proprietary "On-Ramp" found on TCS rims allows easy tire mounting. Our "Bead Lock" ensures that the tire stays locked onto the rim even in the most rugged riding conditions. TCS tire sealant, rim tape and our removable core valve complete a lightweight system.

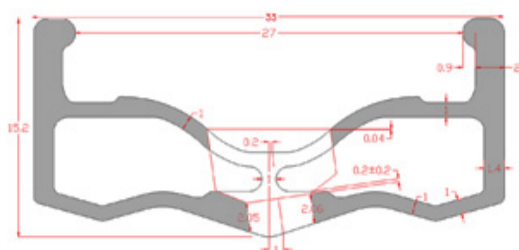
FUN.

TCS technology enables riders to maximize the ride experience anywhere. Improved wheel stiffness and reduced weight improves faster performance.

⚠ WARNING!
SEALANT REQUIRED
FOR TUBELESS USE

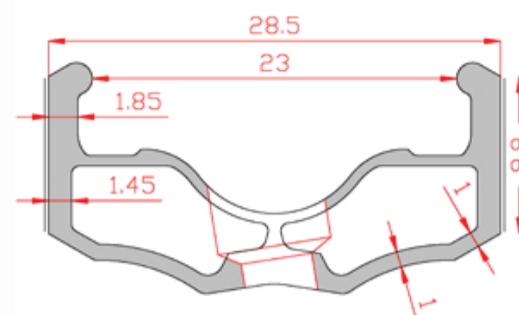
W W W . A L I E N A T I O N B M X . C O M

TCS FELON



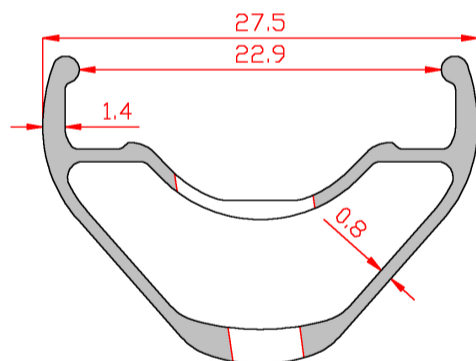
Use: Premium Jump, Park, Street
Material: 6069 T6
(30% stronger than 6061 T6)
Walls: Double
Joint: Welded
Weight: 418g
Diameter: 406 (20")
Drilling: 36H
Valve: TCS & SV
Sidewall:
ERD: 395
Colors: Black, Polished

TCS MALICE



Use: All-Round, Race
Material: 6069 T6
(30% stronger than 6061 T6)
Walls: Double
Joint: Welded
Weight: 325g, g
Diameter: 406 (20"), 507(24")
Drilling: 36H, 28H
Valve: TCS & SV
Sidewall: CNC'd
ERD: 394, 495
Colors: Black, Dark Blue,
Dark Red, Polished

TCS MISCHIEF



Use: Race/Front Only
Material: 6069 T6
(30% stronger than 6061 T6)
Walls: Double
Joint: Sleeved
Weight: 290g
Diameter: 406 (20")
Drilling: 28H, 36H
Valve: TCS & SV
Sidewall: N/A
ERD: 386
Colors: Black

TCS VALVE/TAPE/SEALANT



VALVE
Removable core makes adding
sealant easy. 34 mm Alloy or Brass.

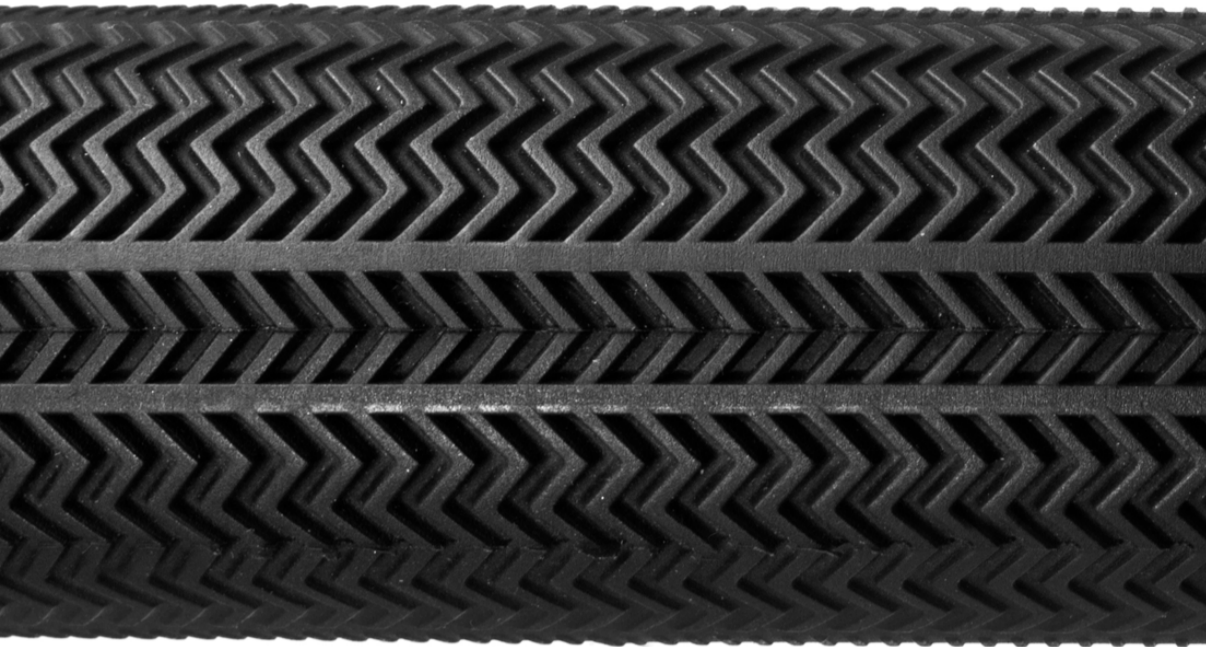


TAPE
Used with ALN's TCS rims
making them air tight
30mm - TCS FELON
28mm - TCS MALICE
28mm - TCS MISCHIEF
1 roll will tape 6 rims



SEALANT
500 ml
2 oz.(59ml) Recommend for one application
Instantly seals ¼ inch punctures
Contains micro sealing particles
Non-adhesive with no mess
Contains natural latex

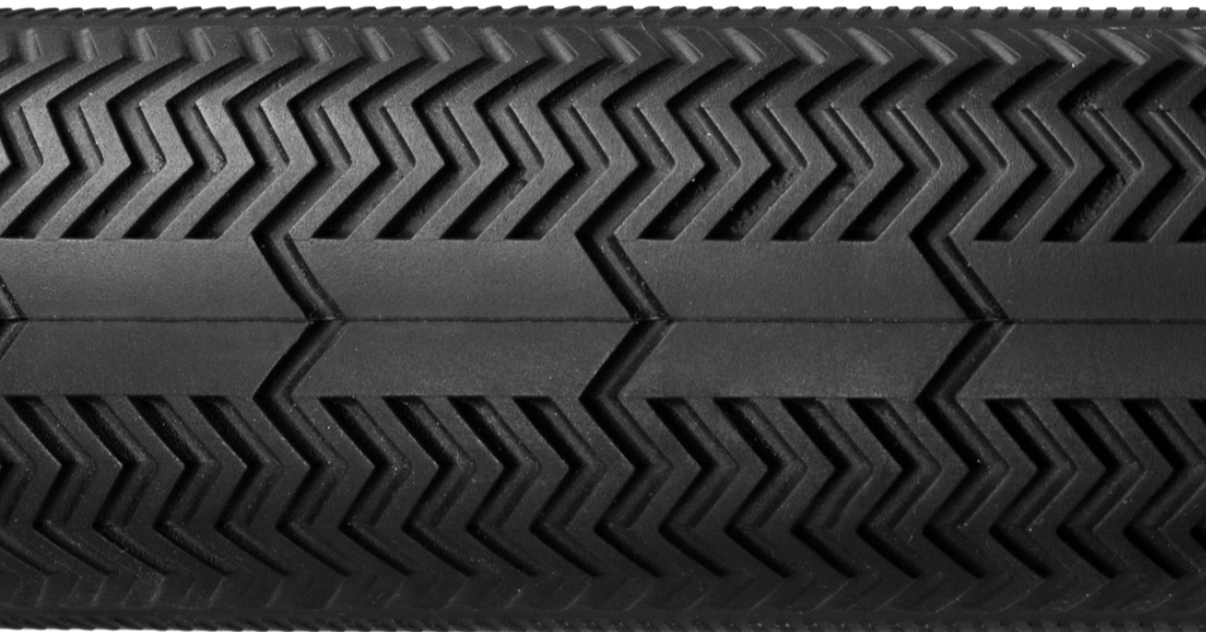
TCS R1



Directional pattern with excellent grip
intended for REAR RACE
Size: 20 x 1.60
Bead: proprietary TCS
TPI: 120
Compound: Dual (Hard Center/Soft Outer)
PSI: 85
Weight: 255g/8.9oz
Color: Black



TCS F1



Directional pattern with excellent grip
intended for FRONT RACE
Size: 20 x 1.95
Bead: proprietary TCS
TPI: 120
Compound: Dual (Hard Center/Soft Outer)
PSI: 85
Weight: 350g/12.3oz
Color: Black



TCS 138



Directional pattern with excellent grip
intended for STREET USE
Size: 20 x 2.3
Bead: proprietary TCS
TPI: 120
Compound: Dual (Hard Center/Soft Outer)
PSI: 85
Weight: 540g/19oz
Color: Black





RUNAWAY

Use: Premium All-around

Material: 6061 T6

Walls: Double

Joint: Welded

Weight: 425g, 520g

Diameter: 406 (20"), 507 (24")

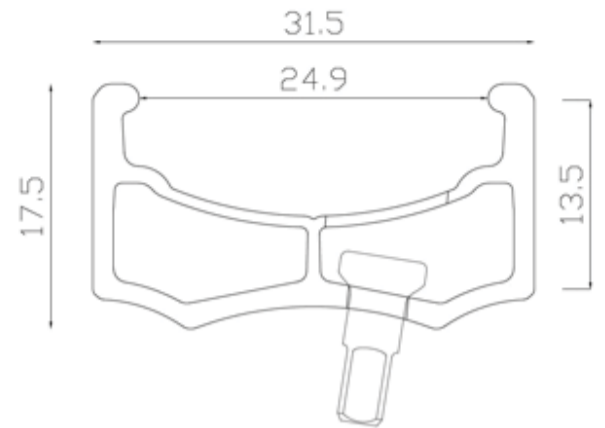
Drilling: 32, 36

Valve: AV

Sidewall: CNC

ERD: 391, 492

Colors: Black, Blue, Polished, Red, Gold



SKYLARK

Use: Brakeless

Material: 6061 T6

Walls: Double

Joint: Sleeved

Weight: 390g

Diameter: 406 (20")

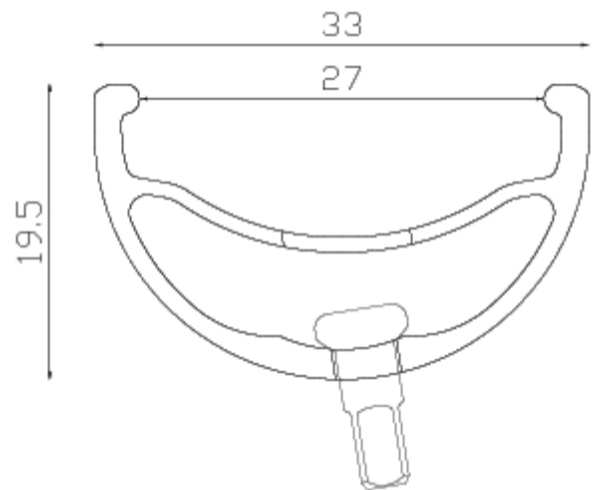
Drilling: 28, 32, 36

Valve: AV

Sidewall: N/A

ERD: 388

Colors: Black, Blue, Polished, Red



DEVIANT

Use: Front Only

Material: 6061 T6

Walls: Double

Joint: Sleeved

Weight: 305g, 415g

Diameter: 406 (20"), 507 (24")

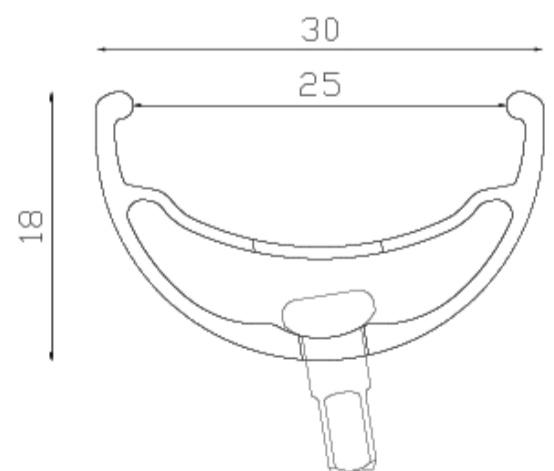
Drilling: 28, 32, 36

Valve: AV

Sidewall: N/A

ERD: 388, 489

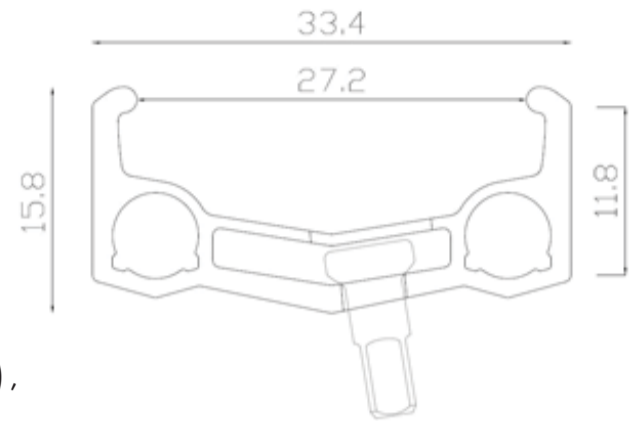
Colors: Black, Blue, Polished, Red, Gold





BLACK SHEEP

Use: Intermediate Jump, Park, Street
 Material: 6061 T6
 Walls: Double
 Joint: Pinned
 Weight: 335g, 430g, 510g, 615g
 Diameter: *call for 305 (16"), 355 (18"),
 406 (20"), 507 (24"), 559 (26")
 Drilling: 36
 Valve: AV
 Sidewall:
 ERD: 345, 395, 496, 548
 Colors: Black, Blue, Red



OS20

Use: Race
 Material: 6061 T6
 Walls: Double
 Joint: Sleeved
 Weight: 462g
 Diameter: 451 (20")
 Drilling: 36
 Valve: SV
 Sidewall:
 ERD: 430
 Colors: Black

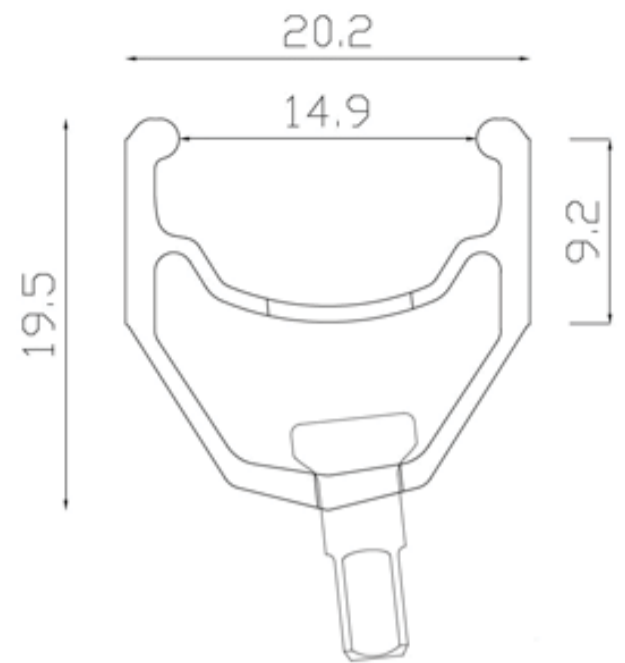
What Is OS20?

OS20 is NOT 22". OS20 is 20", but bigger.
 There are two wheel sizes in the 20" category –
 the 20" on Jr/mini bikes which uses the 451mm
 diameter wheel in narrow widths (for 20-1/8" & 20-3/8" tires),
 and the conventional 20" which uses the smaller 406mm
 diameter wheel but in wider widths. OS20 is 451mm wheel
 diameter in similar widths as 406mm wheels. OS20 tires are
 not compatible with Jr/Mini sized rims, and OS20 rims are
 not compatible with Jr/Mini sized tires.



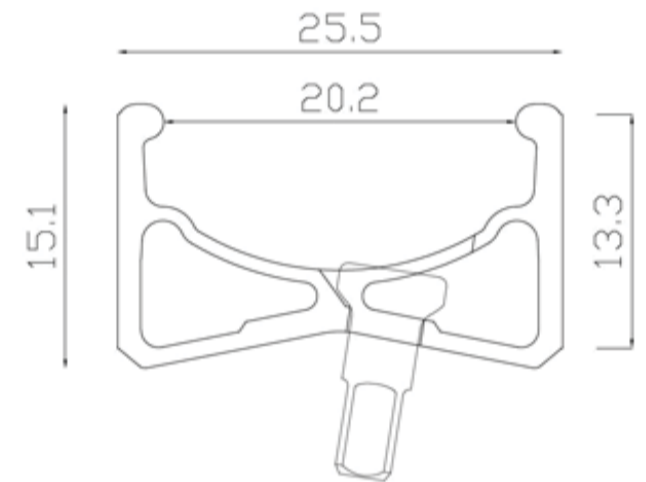
ANKLE BITER

Use: Elite Mini Race
 Material: 6061 T6
 Walls: Double
 Joint: Sleeved
 Weight: 280g, 325g
 Diameter: 451 (20"), 520 (24")
 Drilling: 28, 32, 36
 Valve: FV
 Sidewall: CNC
 ERD: 431, 500
 Colors: Black, Blue, Polished, Red, Gold



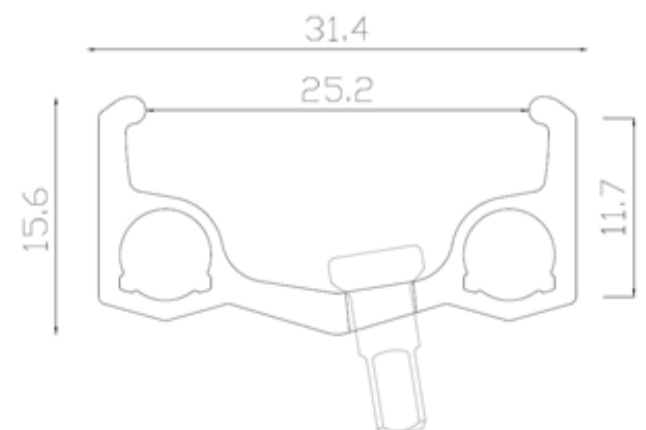
INSURGENT

Use: Elite Expert Race
 Material: 6061 T6
 Walls: Double
 Joint: Welded
 Weight: 315g, 400g
 Diameter: 406 (20"), 507 (24")
 Drilling: 28, 32, 36
 Valve: AV
 Sidewall: CNC
 ERD: 396, 496
 Colors: Black



PBR

Use: Entry Level Jump, Race
 Material: 6061 T6
 Walls: Single
 Joint: Pinned
 Weight: 365g
 Diameter: 406 (20")
 Drilling: 36
 Valve: AV
 Sidewall:
 ERD: 395
 Colors: Black



W H E E L S

AXIS II

Each wheel is hand built within .03 hop & wobble

Spoke prep is applied to each spoke

Stressed multiple times over

Each wheel is checked for proper tension

Use: Park, Street, Trails

Front Hub: Alienation 36H 3/8" Axis with sealed cartridge bearings

Rear Hub: Alienation 36H 14mm Axis,
6 pawls & 5 sealed cartridge bearings, Hollow Axle

Front Rim: Alienation 20" 36H SKYLARK

Rear Rim: Alienation 20" 36H 440

Spokes: Black Stainless Steel

Nipples: Brass

Lacing: 3 cross

Rim Strips: Alienation 16mm blue

Weight: 920g (Front), 1185g (Rear)

Color: Black



UL

Each wheel is hand built within .03 hop & wobble

Spoke prep is applied to each spoke

Stressed multiple times over

Each wheel is checked for proper tension

Use: Front

Hub: Alienation 36H 3/8" Tin Man

Rim: Alienation 20" 36H Deviant

Spokes: Alienation 1.8/2.0 Double Butted Sandvik
T302 stainless steel

Nipples: 12mm Black Alloy

Lacing: 3 cross

Rim Strips: Alienation 20mm red

Weight: 650g

Color: ALL Black

