

A P P A R E L

C O M P O N E N T

100% cotton with a red
AAbolt logo tag stitched
to the lower left side of every tee
ALL TEES AVAILABLE IN
MEDIUM LARGE & XL



GROOVY

B A R S

C H I C A G O

2 piece 4130 heat-treated chromoly
100% heat-treated after welding
11 butted technology
Tig welded construction
19 mm crossbar
Durable powdercoat finish
Rise: 8.25"
Width: 29"
Cross Bar Height: 5.9"
Cross Bar Width: 10.25"
Upsweep: 2 degree
Backsweep: 11 degree
Weight: 28.6 oz
Colors: Black, Nickel

N Y C

2 piece 4130 heat-treated chromoly
100% heat-treated after welding
11 butted technology
Tig welded construction
19 mm crossbar
Durable powdercoat finish
Rise: 8.75"
Width: 29"
Cross Bar Height: 6.3"
Cross Bar Width: 10.65"
Upsweep: 3 degree
Backsweep: 10 degree
Weight: 28.9 oz
Colors: Black, Nickel

H U B S

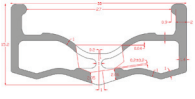


R I M S



I C S F E L O N

Use: Premium Jump, Park
Material: 6069 T6 (30% stronger than 6061 T6)
Walls: Double
Joint: Welded
Weight: 418g
Diameter: 406 (20")
Drilling: 36
Valve: TCS & SV
Sidewall: CNC
ERD: 395
Colors: Black, Polished



I C S M A L I C E

Use: All-Round, Race
Material: 6069 T6 (30% stronger than 6061 T6)
Walls: Double
Joint: Welded
Weight: 325g, g
Diameter: 406 (20"), 507 (24")
Drilling: 28, 36
Valve: TCS & SV
Sidewall: CNC'd
ERD: 394, 495
Colors: Black, Dark Blue, Dark Red, Polished



I C S M I S C H I E F

Use: Race/Front Only
Material: 6069 T6 (30% stronger than 6061 T6)
Walls: Double
Joint: Sleeved
Weight: 290g
Diameter: 406 (20")
Drilling: 28, 36
Valve: TCS & SV
Sidewall: N/A
ERD: 386
Colors: Black



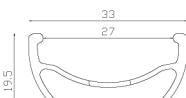
R U N A W A Y

Use: Premium All-around
Material: 6061 T6
Walls: Double
Joint: Welded
Weight: 425g, 520g
Diameter: 406 (20"), 507 (24")
Drilling: 32, 36
Valve: AV
Sidewall: CNC
ERD: 391, 492
Colors: Black, Blue, Polished, Red, Gold



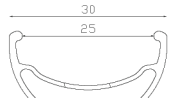
S K Y L A R K

Use: Brakeless
Material: 6061 T6
Walls: Double
Joint: Sleeved
Weight: 390g
Diameter: 406 (20")
Drilling: 28, 32, 36
Valve: AV
Sidewall: N/A
ERD: 388
Colors: Black, Blue, Polished, Red



D E V I A N T

Use: Front Only
Material: 6061 T6
Walls: Double
Joint: Sleeved
Weight: 305g, 415g
Diameter: 406 (20"), 507 (24")
Drilling: 28, 32, 36
Valve: AV
Sidewall: N/A
ERD: 388, 489
Colors: Black, Blue, Polished, Red, Gold



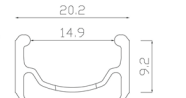
I N S U R G E N T

Use: Elite Expert Race
Material: 6061 T6
Walls: Double
Joint: Welded
Weight: 315g, 400g
Diameter: 406 (20"), 507 (24")
Drilling: 28, 32, 36
Valve: AV
Sidewall: CNC
ERD: 396, 496
Colors: Black



A N K L E B I T E R

Use: Elite Mini Race
Material: 6061 T6
Walls: Double
Joint: Sleeved
Weight: 280g, 325g
Diameter: 451 (20"), 520 (24")
Drilling: 28, 32, 36
Valve: FV
Sidewall: CNC
ERD: 431, 500
Colors: Black, Blue, Polished, Red, Gold



P B R

Use: Entry Level Jump, Race
Material: 6061 T6
Walls: Single
Joint: Pinned
Weight: 365g
Diameter: 406 (20")
Drilling: 36
Valve: AV
Sidewall: CNC
ERD: 395
Colors: Black



B L A C K S H E E P

Use: Intermediate Jump, Park, Street
Material: 6061 T6
Walls: Double
Joint: Pinned
Weight: 335g, 430g, 510g, 615g
Diameter: 406 (20"), 507 (24"), 559 (26")
Drilling: 36
Valve: AV
Sidewall: CNC
ERD: 345, 395, 496, 548
Colors: Black, Blue, Red



O S 2 0

Use: Race
Material: 6061 T6
Walls: Double
Joint: Sleeved
Weight: 462g
Diameter: 451 (20")
Drilling: 36
Valve: SV
Sidewall: CNC
ERD: 430
Colors: Black



What Is OS20?

OS20 is NOT 22". OS20 is 20", but bigger.
There are two wheel sizes in the 20" category – the 20" on Jr/mini bikes which uses the 451mm diameter wheel in narrow widths (for 20-1/8" & 20-3/8" tires), and the conventional 20" which uses the smaller 406mm diameter wheel but in wider widths. OS20 is 451mm wheel diameter in similar widths as 406mm wheels. OS20 tires are not compatible with Jr/Mini sized rims, and OS20 rims are not compatible with Jr/Mini sized tires.

S T E M S

V A U L T

7075 T6 CNC'd
Topload w/split handlebar clamps
Black bolts to match
Stack Height: 31.8 mm
Reach: 53 mm
Rise: 33 mm
Weight: 289 g / 10.2 oz
Color: Gloss Black



I R O N M A I D E N

7075 T6 CNC'd
Frontload w/split handlebar clamps
Colored hollow bolts to match
Reach: 50 mm
Stack Height: 34 mm
Rise (upright): 8.5 mm
Bar Bore: 22.2 bar bore
Weight: 260 g / 9.2 oz
Color: Black

T H R U S T F R O N T



2 0 M M T H R U - A X L E F R O N T



Details: Med-flange, press fit system
Shell: 6061 T6
Bearing: 6805 Stainless sealed cartridge bearings
Holes: 36
Colors: Black
Pitch Center Diameter: 51.5mm
Center to Flange: 27.5mm
Weight: 200 grams less T/A / 7.1 oz.
Optional: 7075 T6 Tapered & Broached T/A 65g/2.3oz



R U S H V 2 F R E E C O A S T E R

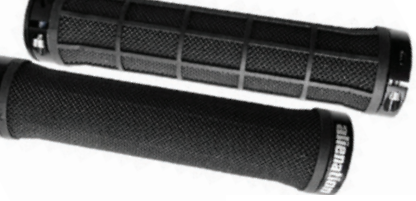
External adjustable slack
Body: 6061 T6
Axle: 14mm 4130 CR-MO Hollow
Bearing: ACB Quad Sealed Bearing
Holes: 36
Drive: 9t, 1/2 x 3/32 LSD, RSD (optional 11t)
Colors: Matte Black
Flange Diameter: 67 mm
Pitch Center Diameter: 58mm
Drive-Side Center to Flange: 28.5 mm
Non-Drive Side Center to Flange: 28.5 mm
Weight: 660g

G R I P S



B A C K L A S H

Finned Bi-directional pattern for unmatched grip
AA Bar End included
A25 Super Soft Kraton Single Density Rubber
Length: 145 mm
Colors: Black



M O T O

Flangeless lock-on with an ultra thin profile
Proprietary window technology for greater comfort
Classic motocross style
knurled on the top side with a half waffle pattern below
Features a 1 pc alloy end cap for simplicity and safety.
Utilizes the new VEXX material. 10x more durable.
Length: 135 mm
Colors: Black



A A B A R E N D S

Push style bar ends
Unique rib design fits most any bar
Packaged in pairs
Colors: Black

S E A T S



B I G B L A C K & B E A U T I F U L (B B B)

Slider System offering fore/aft positioning
Synthetic Perforated Cover
Nylon Fiber Base
Size: 8.4" (Length) * 4.9" (Width) * 2.3" (Pad Height)
Weight: 10.9 oz
Color: Black

S L I D E R B A S I C

Slider System; Offers fore/aft positioning
Nylon Fiber Base, Slim & Light, Texture Top
Model: Plastic
Size: 210mm (L) * 110mm (W)
Weight: 170g
Colors: Black



S E A T P O S T S

B I L L Y C L U B

Pivotal compatible
Ultra-light 3D-forged 6061 alloy
Internal oval construction
Shot-peen anodized
Completely slammable
Diameter: 25.4, 26.8, 27.2 mm
Length: 320 mm
Weight: 207g, 215g, 230g
Colors: Black, Polished

M I D G E T S T I C K

aka Stump / Pivotal compatible
Ultra-light 3D-forged 6061 alloy
Internal oval construction
Slimmed at the top
Shot-peen anodized
Diameter: 25.4 mm
Length: 135 mm
Weight: 95g
Colors: Black

P E D A L S



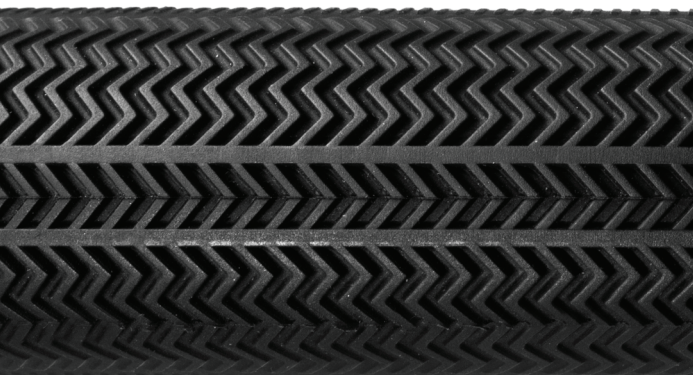
E F F E C T S

Dual Concave Platform Molded from a Nylon+Fiber Composite
14 Traction Pins Per Side
Micro Knurled Body
Embossed Logos
Unsealed Bearings
6 mm Broached 9/16" Chromoly Spindle
Weight: 200g each
Color: Black

T I R E S

T U B E L E S S C O M P A T I B L E S Y S T E M

T C S R 1



Directional pattern with excellent grip intended for REAR RACE
Size: 20 x 1.60
Bead: proprietary TCS
TPI: 60
Compound: Dual (Hard Center/Soft Outer)
PSI: 85
Weight: 255g/8.9oz
Color: Black

T C S F 1



Directional pattern with excellent grip intended for FRONT RACE
Size: 20 x 1.95
Bead: proprietary TCS
TPI: 60
Compound: Dual (Hard Center/Soft Outer)
PSI: 85
Weight: 350g/12.3
Color: Black

T C S 1 3 8

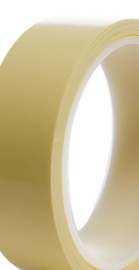


Directional pattern with excellent grip intended for STREET USE
Size: 20 x 2.3
Bead: proprietary TCS
TPI: 60
Compound: Dual (Hard Center/Soft Outer)
PSI: 85
Weight: 540g/19oz
Color: Black

T C S V A L V E / T A P E / S E A L A N T



-VALVE
Removable core makes adding sealant easy.
34 mm Alloy or Brass.



-TAPE
Used with ALN's TCS rims making them air tight
30mm - TCS FELON
28mm - TCS MALICE
28mm - TCS MISCHIEF
1 roll will tape 6 rims



-SEALANT
500 ml
2 oz. (59ml) Recommend for 1 application
Instantly seals 1/4 inch punctures
Contains micro sealing particles
Non-adhesive with no mess
Contains natural latex

W H E E L S



A X I S I I

Use: Park, Street, Trails
Front Hub: Alienation 36H 3/8" Axis with sealed cartridge bearings
Rear Hub: Alienation 36H 14mm Axis, 6 pawls & 5 sealed cartridge bearings, Hollow Axle
Front Rim: Alienation 20" 36H SKYLARK
Rear Rim: Alienation 20" 36H 440
Spokes: Black Stainless Steel
Nipples: Brass
Lacing: 3 cross
Rim Strips: Alienation 16mm blue
Weight: 920g (Front), 1185g (Rear)
Color: Black

U L

Use: Front
Hub: Alienation 36H 3/8" Tin Man
Rim: Alienation 20" 36H Deviant
Spokes: Alienation 1.8/2.0 Double Butted Sandvik T302 stainless steel
Nipples: 12mm Black Alloy
Lacing: 3 cross
Rim Strips: Alienation 20mm red
Weight: 650g
Color: ALL Black

